

# CREATING POST SECONDARY GOALS FOR YOUR STUDENTS IEP?



Work Together NC  
Possibility to Opportunity



Scan to access pdf with  
direct links online!

WTNC is a statewide initiative focused on the transition to adulthood for people with intellectual and developmental disabilities. Utilize the website to assist you in completing informal and formal transition assessments, as well as identifying activities to support their measurable post secondary goals!

## FORMAL AND INFORMAL ASSESSMENT RESOURCES



- Employment Toolkit for People with Intellectual and Developmental Disabilities: Work Strengths/ Skills Inventory, Work Interests Inventory, My Learning Styles, and more!
- Postsecondary Education Toolkit for Students with Intellectual and Developmental Disabilities: College Interest Inventory, Student Directed Exploration, and more!
- HEELS 2 Participation: Community Participation Toolkit: Goal Setting, Safety, Money Management, and more!

## EMPLOYMENT GOAL ACTIVITY RESOURCES



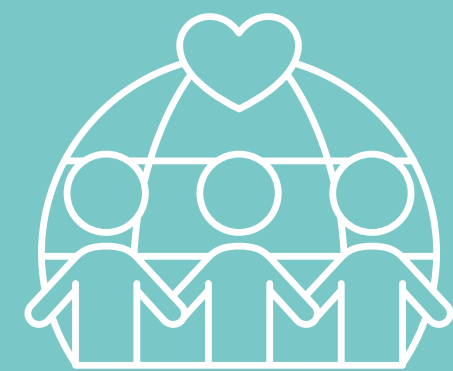
- Employment Action Plan: Student can identify steps to assist them in meeting their goal
- Self Determination / Self Advocacy Action Plan: Student can identify steps to assist them in advocacy for themselves.

## EDUCATION/ TRAINING GOAL ACTIVITY RESOURCES



- Postsecondary Education Action Plan: Student can identify learning opportunities after high school.
- IEP Action Plan: Student can learn how to participate in their IEP Meetings and Transition Planning.

## COMMUNITY PARTICIPATION ACTIVITY RESOURCES



- Housing and Community Living Action Plan: Student can identify housing and daily living needs.
- Adult Services Action Plan: Students can learn more about the supports they may need after graduation.
- Service Library by Physical Location: Students can explore hands on services and groups located in their area.

## DAILY/ INDEPENDENT LIVING SKILLS ACTIVITY RESOURCES



- Financial Well-Being Action Plan: Student can learn more about how to control their personal finances.
- Transportation Action Plan: Student can learn more about available transportation options in their area.
- Supported Decision-Making and Alternatives to Guardianship Action Plan